



AUCKLAND GIRLS'
GRAMMAR SCHOOL
PER ANGUSTA AD AUGUSTA

Strategic Plan 2017-2019

Board of Trustees 2016

Per Angusta Ad Augusta
'Through trials to triumph'

*'Educated at Auckland Girls Grammar School
Equipped for the World'*



INTRODUCTION

Auckland Girls' Grammar School was established in 1888 and was the first state secondary school for young women in Auckland. Throughout its history the school has encouraged the development of personal excellence in all students in academic, sporting, social and cultural activities. It is a leading inner city girls' school with a unique traditional heritage and an innovative and progressive curriculum.

Our students come from throughout the Auckland region and represent over 60 different cultures. Our school is committed to providing young women with an education which encourages achievement and self-esteem, fosters a co-operative spirit and celebrates diversity.

As well as the standard facilities the school has a whare, a large auditorium for school and community use, an historic building which is protected by the Historic Places Trust, two gymnasiums, a swimming and diving pool, a custom built Technology block, a recording studio, a school cafeteria and spacious well-appointed classrooms, Science laboratories and an i-Centre, which occupies the equivalent of seven classrooms and enables us to provide 21st Century learning for our students. It houses our extensive Library collection and provides the latest technology and independent learning spaces for use by staff and students.

Our beautiful school grounds are very well maintained and include mature trees, in particular several oak trees that are over 100 years old, a Japanese Garden, a sculpture garden and areas of native planting. The school also owns and administers a Child Care Centre for staff, student and community use. Auckland Girls' Grammar School is situated on a steep site in Central Auckland adjacent to Western Park, our limited outdoor spaces for physical and recreational activities are supplemented by the use of the park's playing fields.

Committed to the right to education for all, Auckland Girls' Grammar School is the lead school for a Teen Parenting Unit for young mothers from the greater Auckland area. Eden Campus, which is situated at 16 Ngauruhoe St, Mt Eden was established in February 2004 and moved into the refurbished premises in Mt Eden in August 2004, becoming part of Auckland Girls' Grammar School property "portfolio". An attached Child Care Centre also operates from the site and is funded by The Further Chance Charitable Trust, which has been established for this purpose.

At Auckland Girls' Grammar School achievement related data for all ethnic groups is analysed and specific targets are set to improve the achievement of all of our students. Teachers at Auckland Girls' Grammar School are encouraged to have high expectations for all students. We recognise the need to identify

and make meaningful provision for individual students with special learning needs and learning difficulties. We are committed to providing meaningful academic and vocational pathways for all our students and to this end, we offer a wide range of options and counselling and support for students across all levels.

Auckland Girls' Grammar School acknowledges the place of the Treaty of Waitangi in its policies and practices and is committed to improving the learning outcomes for Maori and Pasifika students. All staff are expected to have a basic understanding of tikanga Maori.

The school's whanau unit, Nga Tumunaki o Kahurangi was established in 1987 as the first secondary school total immersion unit in New Zealand. Since then it has become a Whanau Unit with up to 100 students from Year 9 to Year 12 in four vertical forms. The unit is based on the principles of Te Reo, Tikanga Maori, Mana Wahine and Tino Rangatiranga. We offer the opportunity to study Te Reo Maori to Year 13 level to all students and senior students who have achieved Level 3 Te Reo Rangatira are able to study Stage One Maori at University.

The school has an active Old Girls' Association and Old Girls' Trust which provide support and practical assistance in the form of scholarships and grants to our students. In addition a number of trusts, including the Cotter Trust and the Louise Gardner Trust founded by ex-Principal Louise Gardner also provide generous support to our students while at school and to assist with tertiary study costs.

Our Motto

Per Angusta Ad Augusta
Through Trials to Triumph

IMPLEMENTING THE TREATY OF WAITANGI

Auckland Girls' Grammar School is committed to meeting Treaty of Waitangi obligations and the bi-cultural expectations established by the Treaty of Waitangi. We will work in genuine partnership with Māori in order to ensure that Māori girls at Auckland Girls' Grammar School are enabled to achieve the highest standards of success and to reach the educational and cultural aspirations of Māori students and their whanau.

The partnership involves:

- Māori school community participation in decision-making at all levels of school governance; and
- senior managers reflecting the partnership in decisions, day-to-day practices, and procedures; and
- teaching and support staff reflecting the partnership in their practice and participation in school life.
- This commitment includes working towards achieving the goals of the National Education Goals (NEGS) and National Administration Guidelines (NAGs), particularly:
 - acknowledging the unique place of Māori;
 - increasing participation and success on the part of Māori through the advancement of Māori education initiatives, including education in Te Reo Māori;
 - collaborating with, and regularly reporting to, the school's Māori community concerning plans and targets for improving Māori student achievement;
 - ensuring that Māori students find Auckland Girls' Grammar School a safe and supportive environment;
 - profiling and promoting Māori stories of success.

The Board of Trustees will implement and develop policies which give effect to our obligations under the Treaty of Waitangi.

THE STRATEGIC PLAN STRUCTURE

VALUES

PRIDE

- Pride
- Respect
- Integrity
- Diligence
- Empathy

CITIZENSHIP

“Fulfilling our responsibilities to society and valuing our unique contribution to the world”

FELLOWSHIP

Growing a community of great women

EXCELLENCE

Our expectations and goals in all aspects

VISION

VISION

That Auckland Girls' Grammar School is the school of choice for providing an excellent education that nurtures and values the unique contribution of women as global citizens and leaders of community, industry, enterprise and creativity.

**Educated at Auckland Girls' Grammar School
Equipped for the World**

MISSION

MISSION

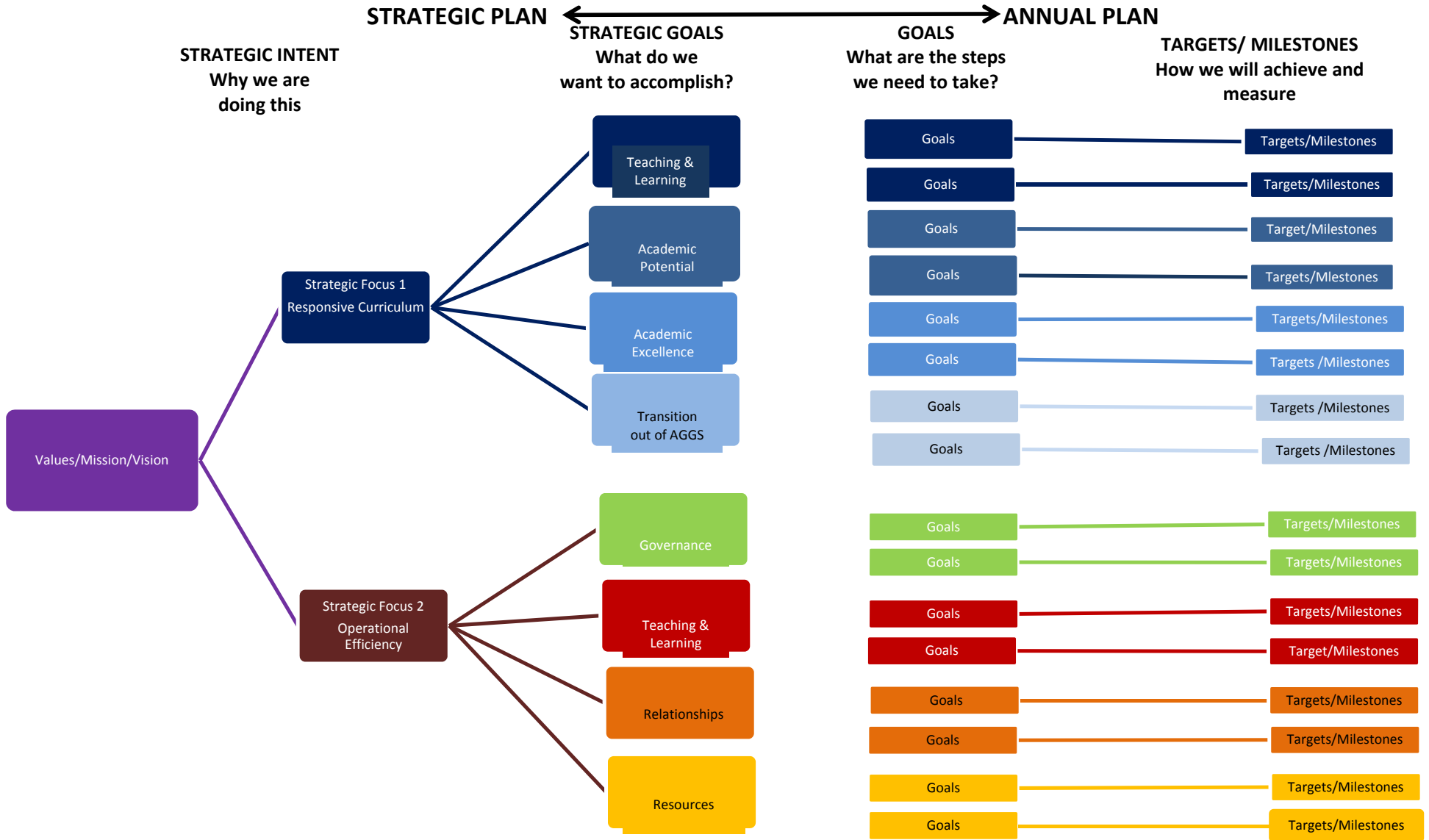
Auckland Girls' Grammar School is committed to providing an innovative education which nurtures intelligence and lifelong learning, encourages achievement, creativity and confidence and fosters a co-operative spirit that contribute to ensuring each girl's potential is maximised and realised.

STRATEGIC FOCUS AREAS

Responsive Curriculum

Operational Efficiency

RELATIONSHIP BETWEEN THE STRATEGIC PLAN AND THE ANNUAL PLAN



VALUES

VISION

MISSION

STRATEGIC FOCUS AREAS

STRATEGIC GOALS

GOALS

AUCKLAND GIRLS' GRAMMAR SCHOOL STRATEGIC PLAN 2017 – 2019 OVERVIEW

PRIDE
Pride, Respect, Integrity, Diligence, Empathy

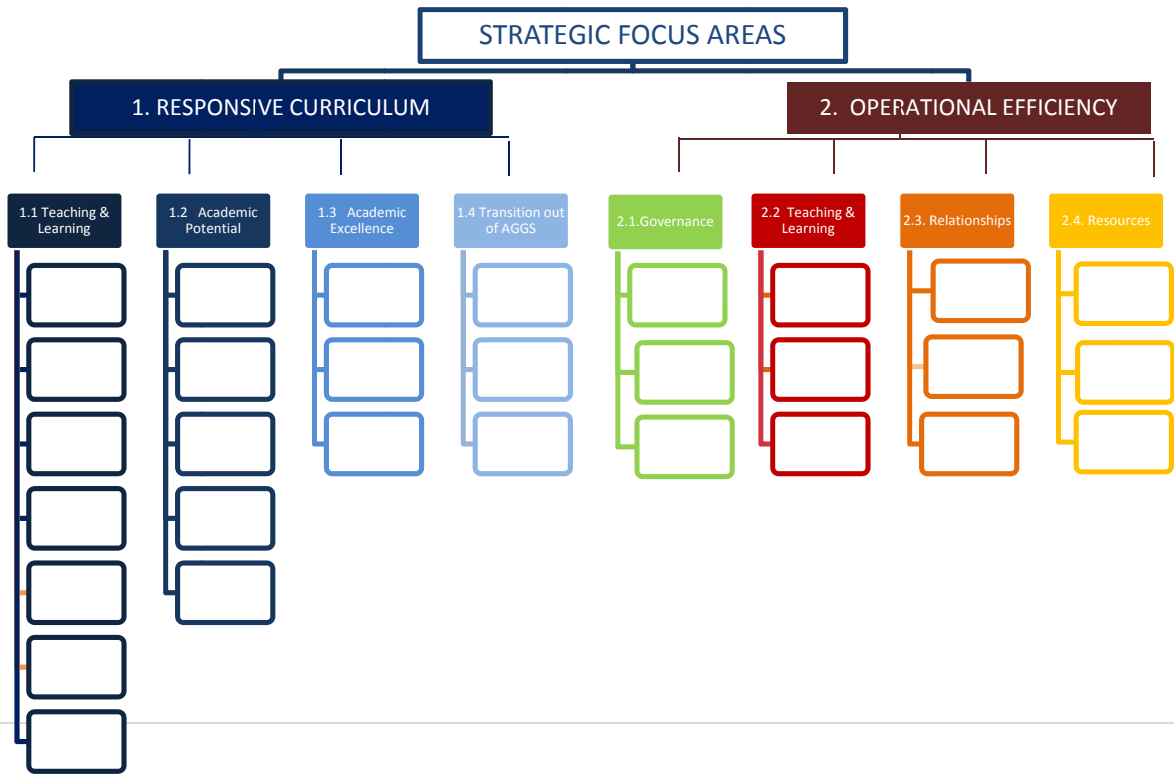
CITIZENSHIP
Fulfilling our responsibilities to society and valuing our unique contribution to the world

FELLOWSHIP
Growing a community of great women

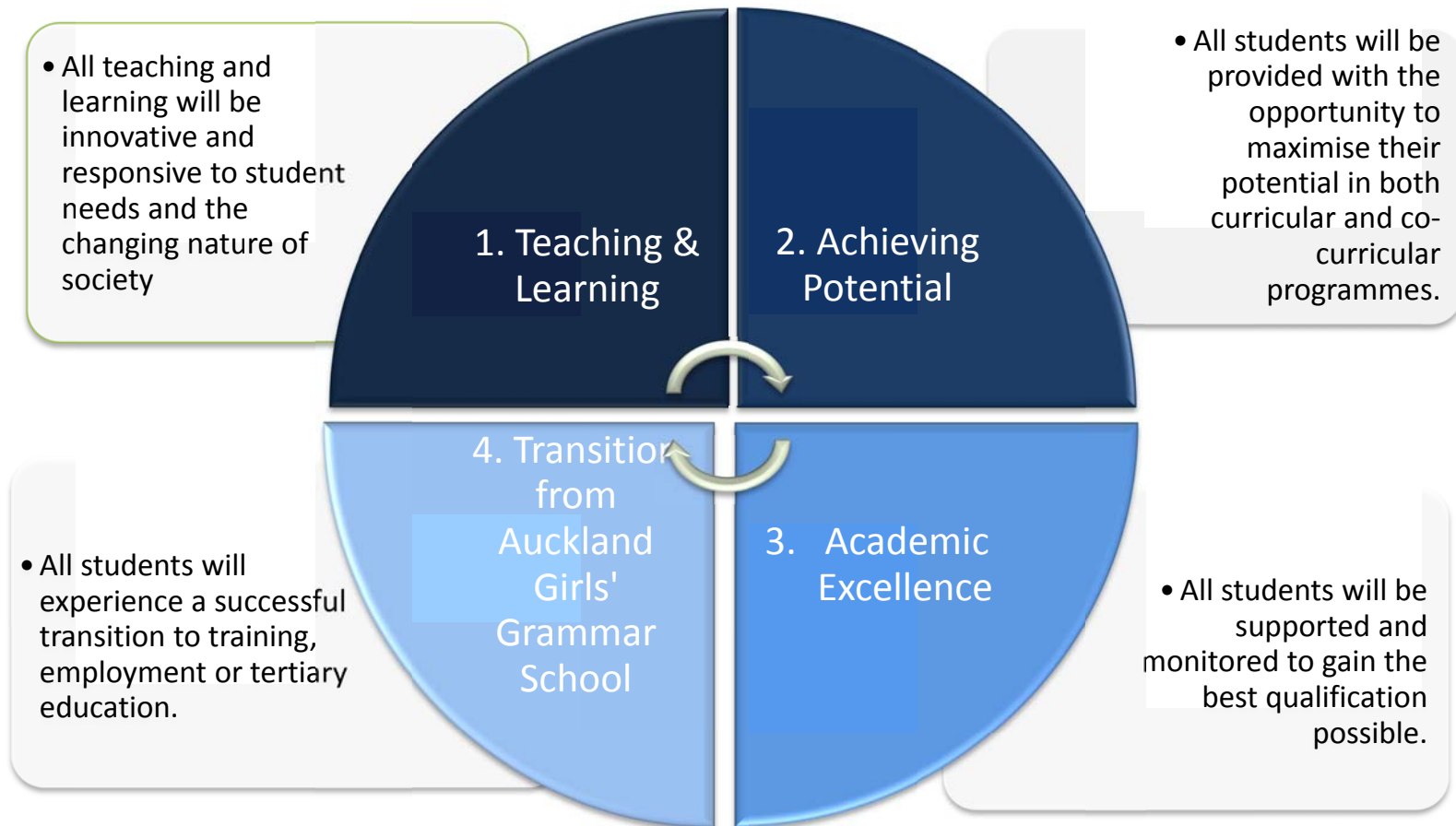
EXCELLENCE
Our standards and expectations

VISION
That Auckland Girls' Grammar School is the school of choice for providing an excellent education that nurtures and values the unique contribution of women as global citizens and leaders of community, industry, enterprise and creativity.
Educated at Auckland Girls' Grammar School, Equipped for the World.

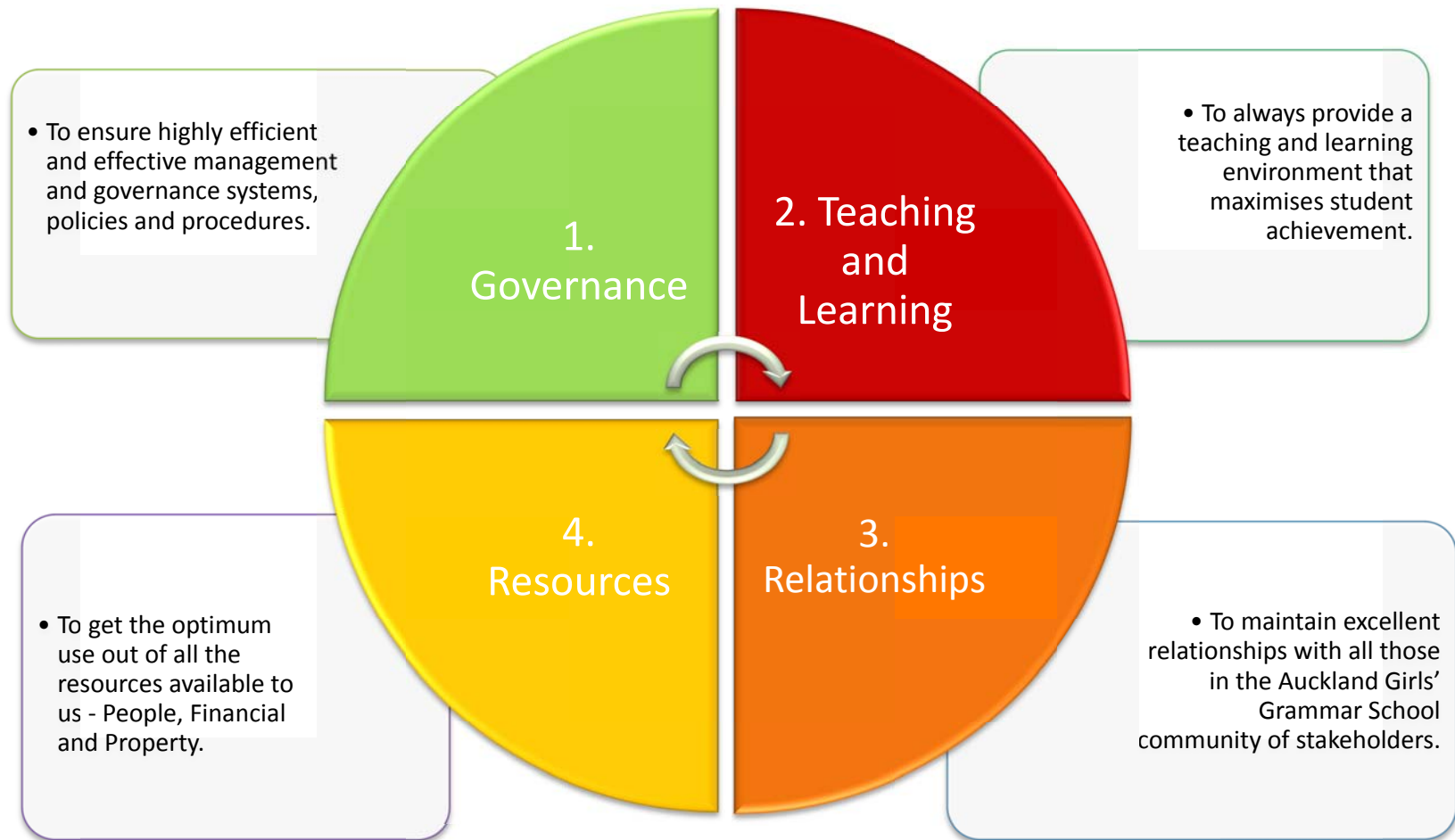
MISSION
Auckland Girls' Grammar School is committed to providing an innovative education which nurtures intelligence and lifelong learning, encourages achievement, creativity and confidence and fosters a co-operative spirit that contribute to ensuring each girl's potential is maximised and realised.



STRATEGIC FOCUS AREA 1: RESPONSIVE CURRICULUM



STRATEGIC FOCUS AREA 2: OPERATIONAL EFFICIENCY



This is to be read in conjunction with the 2017 Annual Plan, the Annual Achievement Targets and Statement of Analysis of Variance and the School's Property Plan